



# ALASKA DIVISION OF HOMELAND SECURITY & EMERGENCY MANAGEMENT



## SITUATION REPORT 24-302 • October 28, 2024

Toll-Free 1.800.478.2337

Anchorage Area 907.428.7000

SEOC 907.428.7100

<p><b><u>SEOC Preparedness Level</u></b>  <b>Level 2-Heightened Awareness</b></p>	<p><a href="http://ready.alaska.gov">http://ready.alaska.gov</a></p>	<p><b><u>National Terrorism Advisory System:</u></b>  <a href="#">Read the NTAS Bulletin here</a></p>
<p><b><u>Maritime Security (MARSEC)</u></b> Level:1- Minimum Appropriate Security Measures</p>	<p><b>WHO Novel Coronavirus Pandemic (COVID-19):</b> <a href="#">2019 Novel Coronavirus</a></p>	<p><b><u>Alaska Military Installation Force Protection</u></b>  <b>Level:</b> FPCON Bravo</p>

(Significant changes from previous situation reports are red.)

### **Significant Issues:**

#### **West Coast Storm:**

SEOC continues at Level 2, engaged in a full multiagency response to Kotzebue, Northwest Arctic Borough (NWAB) and other communities impacted by the 2024 October West Coast Storm disaster.

#### **SEOC Response in Kotzebue:**

- State Disaster Individual Assistance registration is open for residents in Kotzebue (See attached). Multiple in-person, door-to-door registrations were taken, and an in-person meeting location will open today at the NWAB office with state and NWAB representatives.
- SEOC Kotzebue Field Division Supervisor (DIVSUP), Kotzebue Borough DIVSUP, and Kotzebue Mass Care Group Supervisor are in Kotzebue coordinating the state response with NWAB and City of Kotzebue Incident Command.
- Division of Forestry and Fire Protection (DOF&FP) crew of 9 worked all weekend de-watering properties with pumps and hoses and assisting with disaster cleanup.
- A team of 9 Alaska Organized Militia (AKOM), composed of Alaska National Guard and Alaska State Defense Force service members worked all weekend and are continuing today to:
  - Distribute relief supplies including heaters, dehumidifiers,
  - Assist residents with home damage to sewer, water, and gas lines.
  - Repair wheelchair access and stairs.
  - Stabilize fuel tanks.
  - Repair Kotzebue Recreation Center exterior.
  - Clear storm debris from 10 residential properties.
  - Assist with drying out subflooring.
- Village Public Safety Officers are working alongside DOF&FP and AKOM teams to assist residents.
- Red Cross is assisting impacted residents in Kotzebue with emergency assistance.
- ANTHC Logistic Chief is supporting Kotzebue City and Northwest Arctic Borough Incident Commands with Incident Management.

- 85 residences were assessed for flood/storm damage. 45 homes had some type of damage. 18 homes had sub floor and insulation damage.
- Heaters, dehumidifiers, and relief supplies were distributed to residents with damage and need.
- The Native Village of Kotzebue is distributing water, food boxes, and feeding responders.
- Alaska Native Tribal Health Consortium's Healthy Alaska Natives Foundation is managing the financial donations that are made to the Kotzebue Flood Relief Fund for this west coast storm incident. <https://healthyalaskanatives.org/kotzebue-flood/>
- Plan in place to replace lost subsistence foods.
- A seven person construction crew from two Anchorage area churches are en-route to Kotzebue to assist with emergency repairs of damaged homes.

#### **Other Storm Communities:**

SEOC has received infrastructure damage (berm, roads, poles, etc.) reports from

- Nome (Council Road)
- Shishmaref
- Shaktoolik
- Wales

#### **Department of Health (DOH):**

For current information, see: <https://health.alaska.gov/dph/Pages/default.aspx>  
<https://health.alaska.gov/dph/Emergency/Pages/prepared/default.aspx>

#### **NTAS Bulletin:**

The U.S. Department of Homeland Security issued an updated National Terrorism Advisory Bulletin on May 24, 2023. The current and expired bulletins can be viewed at the below link.

<https://www.dhs.gov/national-terrorism-advisory-system>

#### **Travel Alerts and Conditions:**

For current driving conditions, dial 511 or visit: <https://511.alaska.gov/>

#### **Barry Arm Landslide / Tsunami Risk:**

For the latest information on the Barry Arm Landslide and Tsunami risk, click here:

<https://dggs.alaska.gov/hazards/barry-arm-landslide.html>

#### **Earthquakes:**

United States Geological Service (USGS) Earthquake Information: <http://earthquake.usgs.gov/>

National Tsunami Warning Center: <http://tsunami.gov/>

#### **Alaska Volcanoes:**

**Great Sitkin** Alert Level: **Watch** and Aviation Color Code: **Orange**

**Mt. Spurr** Alert Level: **Advisory** and Aviation Color Code: **Yellow**

For Alaska Volcano updates, go to: <https://www.avo.alaska.edu/>

#### **Air Quality Index (AQI) Advisories:**

For the most up-to-date Air Quality Index Advisories:

<http://dec.alaska.gov/Applications/Air/airtoolsweb/Home/Index>

#### **Spills of Oil and Hazardous Substances:**

The Alaska Division of Environmental Conservation (ADEC) Spill Prevention and Response page is located at: <https://dec.alaska.gov/spar/>

**Alaska Cyber Security Information:**

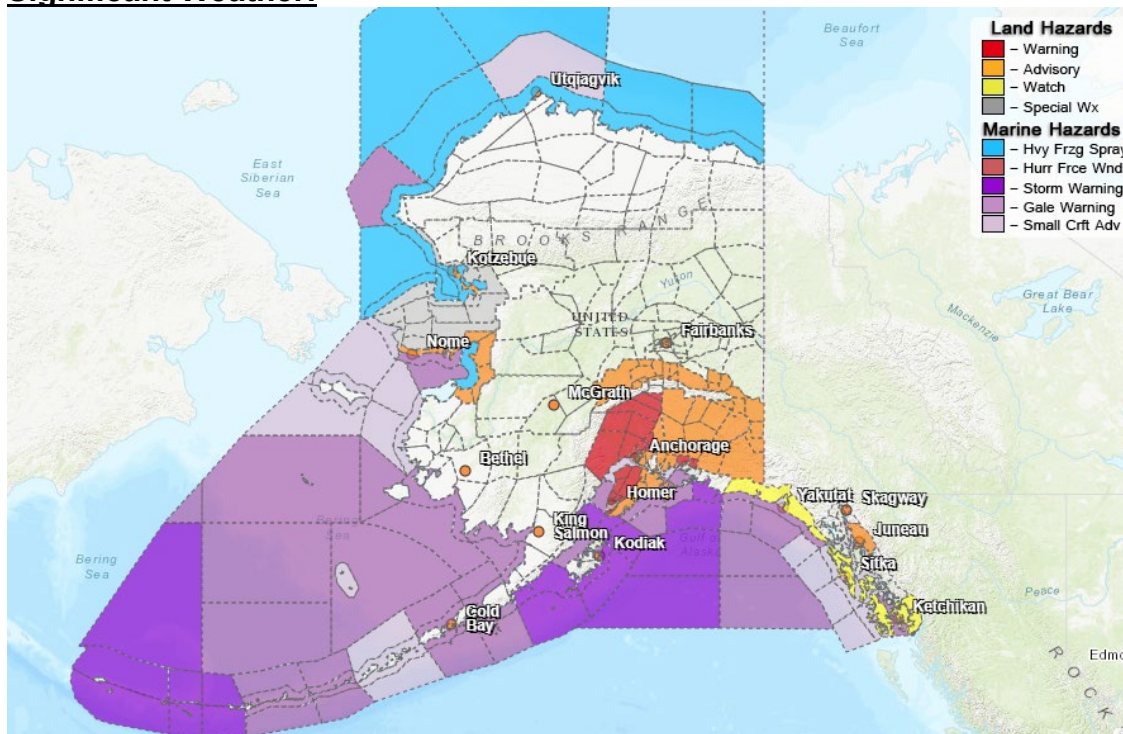
State Employees may sign up for cybersecurity notifications and alerts at:

<https://oit.alaska.gov/security>

Cybersecurity and Infrastructure Security Agency (CISA)-Cybersecurity Services and Tools:

[www.cisa.gov/free-cybersecurity-services-and-tool](http://www.cisa.gov/free-cybersecurity-services-and-tool)

**Significant Weather:**



**Winter Storm Warnings:**

- **Susitna Valley**-in effect from 10:00 am this morning to 10:00 am Tuesday south of Talkeetna.
- **Matanuska Valley**-in effect from 10:00 am this morning to 10:00 am Tuesday from Wasilla westward.
- **Western Kenai Peninsula**-in effect from 6:00 pm this evening to 1:00 pm Tuesday for along the inlet.

**Blizzard Warning:**

- **Northeast Prince William Sound**-in effect from 4:00 am Tuesday to 7:00 am Wednesday for Thompson Pass.

**High Wind Watch:**

- **City and Borough of Yakutat; Cape Fairweather to Lisianski Strait; City and Borough of Sitka; Western Kupreanof and Kuiu Island**-in effect from late tonight through late Tuesday night.

**Winter Weather Advisory:**

- **Western Prince William Sound**-in effect from 6:00 pm this evening to 1:00 pm Tuesday for interior areas of the Kenai Peninsula.
- **Anchorage**-in effect from 10:00 am this morning to 1:00 pm Tuesday.
- **Copper River Basin**-in effect from 6:00 pm this evening to 7:00 am Wednesday.
- **Upper Tanana Valley**-in effect from 2:00 am Tuesday to 7:00 am Wednesday.
- **Southern Seward Peninsula Coast; Eastern Norton Sound and Nulato Hills; Baldwin Peninsula**-in effect now until 6:00 pm this evening.

**Wind Advisory:**

- **Northern Denali Borough; Eastern Alaska Range North of Trims Camp**-in effect until 4:00 pm this afternoon.

**Special Weather Statement:**

- **Kivalina and Red Dog Dock; Lower Kobuk Valley; Northern Seward Peninsula; Shishmaref; Bering Strait Coast; Interior Seward Peninsula**-Snow and blowing snow expected through Monday afternoon.

For more information and the most current Weather, Watches/Warning/Advisories go to:  
<https://www.weather.gov/arh/>

**The Next Situation Report** will be on **October 29, 2024**. An interim report will be prompted by a significant change in the situation or the threat level. This report is posted on the internet at <https://ready.alaska.gov/sitrep>.

**To register for email distribution, PLEASE go to:**

<http://list.state.ak.us/mailman/listinfo/dhsem.situation.report>.

Direct questions regarding this report to the SEOC at 907-428-7100 or [seoc@alaska.gov](mailto:seoc@alaska.gov).